

The Best of "Baxter"

*An awesome new
bull mother turning heads!*

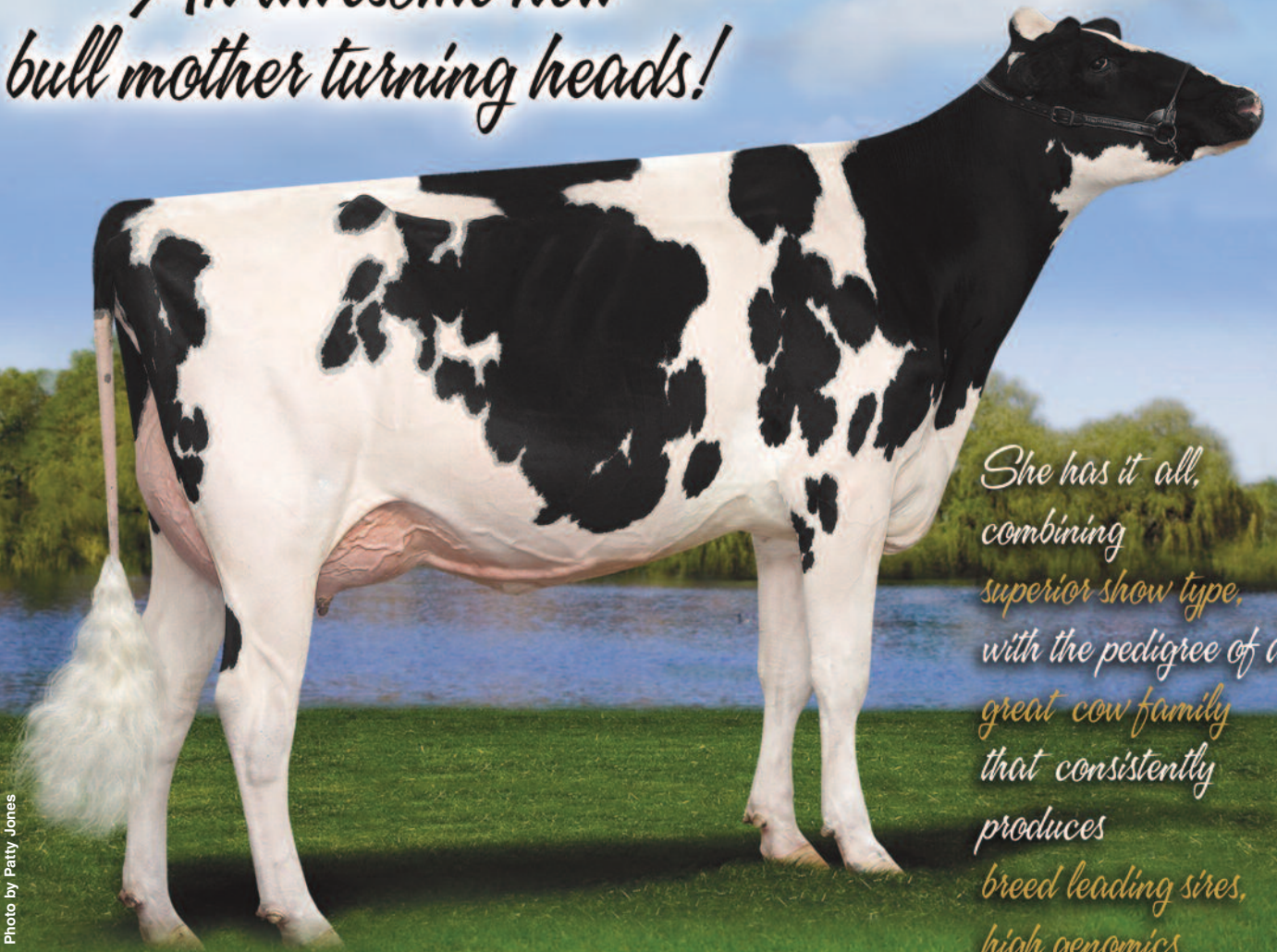


Photo by Patty Jones

*She has it all,
combining
superior show type,
with the pedigree of a
great cow family
that consistently
produces
breed leading sires,
high genomics,
high production
and components.*

Braedale Altabaxter Metric (VG-87-2y)

2-1 proj. 13102 4.7 616 3.7 485 (336-428-391) kg

2nd Junior 2-Year-Old Ontario Summer Show 2010

She stood in the middle of the ring for Intermediate Champion consideration.

"Baxter" from VG-2y-5* "Allen" maternal sister to Braedale Goldwyn.

She will be flushed to "Windbrook" and "Snowman".

Contracted to Alta and Semex. Your inquiries are welcome.

We anticipate her
full GLPI index
will exceed 2000
in December.

See her at the Royal Winter Fair.

Housed at Crovalley and owned with Greaveston Genetics and Ari Ekstein.

CROVALLEY HOLSTEINS

918 River Road West
Hastings, ON K0L 1Y0
Phone: 705-696-3277
Cell: 705-875-1548
e-mail: crovalley@msn.com

ARI EKSTEIN

8400 Huntington Road
Vaughan, ON L4L 1A5
Phone: 905-856-7333
Cell: 416-725-8733
e-mail: ari@qualityseeds.ca

GREAVESTON GENETICS INC.

16 Mountainview Road South
Georgetown, ON L7G 4K1
Phone: 905-877-7356
Cell: 905-873-4288
e-mail: paul@greavestongenetics.com